

# ATTENTION

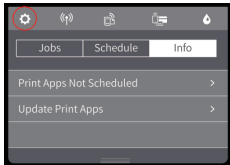


Don't let the printer  
firmware upgrade deprive  
of your rights to save costs.

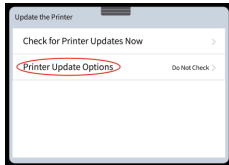
**#Turn It Off Now!**  **OFF**

## Six Steps to Close Printer Automatically Update

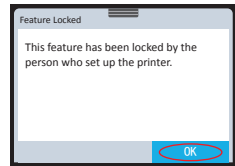
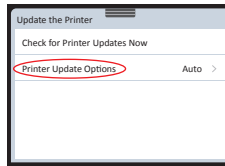
1.1 Click "Setup" on printer ;



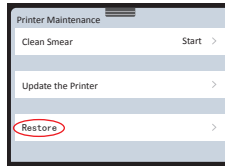
1.4 Click on "Printer Update Options";



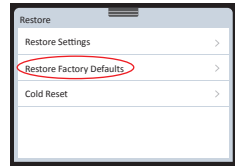
1.1 Notice: When trying to turn off the "Printer Update", it may prompt "The feature has been locked by the person who set up the printer." It's impossible to turn off this function, but click on "OK" only.



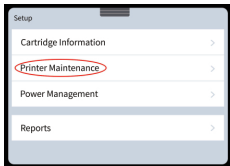
1.2 Back to last step, click on "Restore"



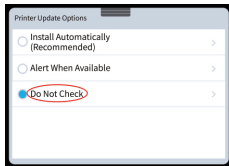
1.3 Click on "Restore Factory Defaults"



1.2 Click on "Printer Maintenance";



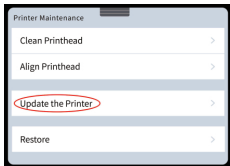
1.5 Click on "Do Not Check";



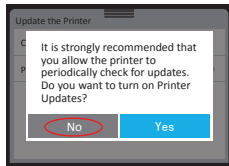
1.4 Once "Restore Factory Defaults" is sent, then you can follow the normal operation procedures to turn off the Printer Update options.

Notice: Updating firmware may cause replacement chips to fail to work properly, please click "No" when above notice (as picture 2) shows to turn off "Printer Update".

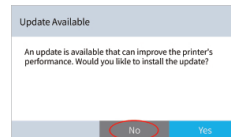
1.3 Click on "Update the Printer";



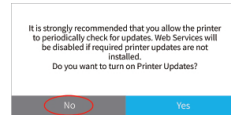
1.6 Click "No" for Printer Update.



Click "No" for Printer Update



Picture 1



Picture 2